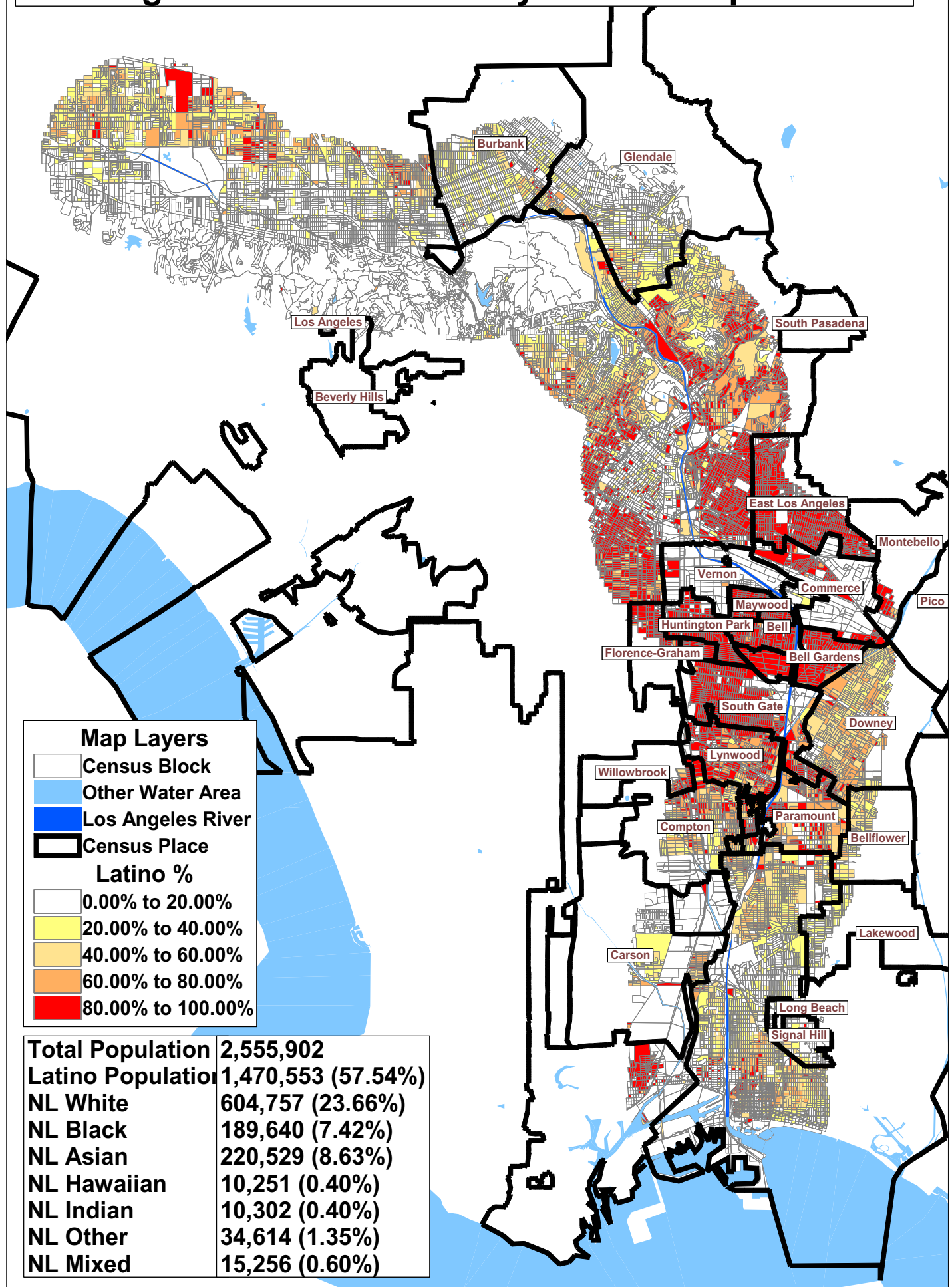


Los Angeles River Community - Latino Population %



Map Layers

- Census Block
- Other Water Area
- Los Angeles River
- Census Place

Latino %

- 0.00% to 20.00%
- 20.00% to 40.00%
- 40.00% to 60.00%
- 60.00% to 80.00%
- 80.00% to 100.00%

Total Population	2,555,902
Latino Population	1,470,553 (57.54%)
NL White	604,757 (23.66%)
NL Black	189,640 (7.42%)
NL Asian	220,529 (8.63%)
NL Hawaiian	10,251 (0.40%)
NL Indian	10,302 (0.40%)
NL Other	34,614 (1.35%)
NL Mixed	15,256 (0.60%)